

English

Learning Journey

ON TO GCSE
ENGLISH LANGUAGE
& LITERATURE

Exploration of
authorial intent,
linked to politics



Exploration of
structure



Write like an
academic

1912 and 1945
context, including
capitalism & socialism



GCSE English Literature:
An Inspector Calls



English Literature
assessment: How
does...

Write like a
novelist



Exploration of how tension
is created through
language & structure



Analysis of short
gothic extracts:
how is tension
created?



Exploration of how
gothic settings are
created: motifs



Victorian context work, focusing
on the Industrial Revolution.



Explicit work
on key
vocabulary



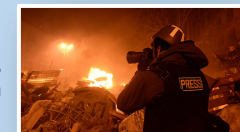
Gothic
Literature: The
Woman in Black



Plot, character &
theme analysis



Writing assessment:
write the opening chapters to a
gothic novel



Reading assessment:
starting with this
extract, how does Hill
create tension?



Crafting
characters &
settings



Conventions
of gothic
literature



Writing
assessment: Write
own newspaper
article



Exploration of
authorial intent
in short stories
and poetry



Explore how
characters are
created in short
stories



Explore how
ideas about war
are expressed
in war poetry



War & the
media



Writing assessment:
Write your own play
on the theme of
dysfunctional love



Year
9

Explicit work on
key vocabulary



Propaganda
context work.



Compare how war is
presented in poetry



Non-fiction:
Explore the
role of the
media



Non-fiction:
write like a journalist



Reading assessment: How
do the poets present war in
Remains and in one other
poem you have studied?



Effective openings &
endings: extracts
from novels.

It was a bright
cold day in April,
and the clocks
were striking
thirteen.

Non-fiction:
Jack the
Ripper

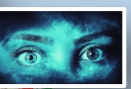


Reading assessment:
How do two writers
present the role of the
detectives in their
stories?

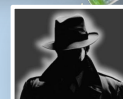


Crime
Literature

Structure &
language analysis
to build suspense.



Exploration
of the
portrayal of
detectives



Conventions &
context of
crime fiction



Exploration of
how criminals
are presented
in poetry

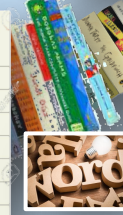


The importance
of language:
50-word
challenge

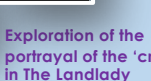
Character extract
analysis from a
variety of
Shakespeare plays



Year
8



The
Landlady



Exploration of the
portrayal of the 'criminal'
in The Landlady



Explicit work
on key
vocabulary



Explicit work on
key vocabulary



Year
7



Plot and character work

Myths &
Legends



Language analysis skills



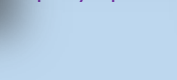
Heroes &
Villains



Analysis of heroes &
villains in mythology



Women in mythology.
Context, analysis &
poetry exploration



Write like a short
story writer
assessment:
write a myths &
legends story



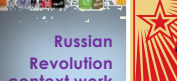
Dystopia fiction:
Animal Farm



Explicit work on
key vocabulary



Evaluation
skills



Russian
Revolution
context work



The art of persuasion
& exploration of
non-fiction
speeches



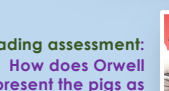
Features of speech writing:
structural devices



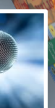
Reading assessment:
How does Orwell
present the pigs as
betraying the laws of
animalism?



Spoken language
presentation: delivery of
persuasive speech.



Write like a
politician
assessment: write
a speech to
encourage
students to revolt
against the
teachers.



How to deliver
a speech: pace,
gestures.



Write like a
playwright

